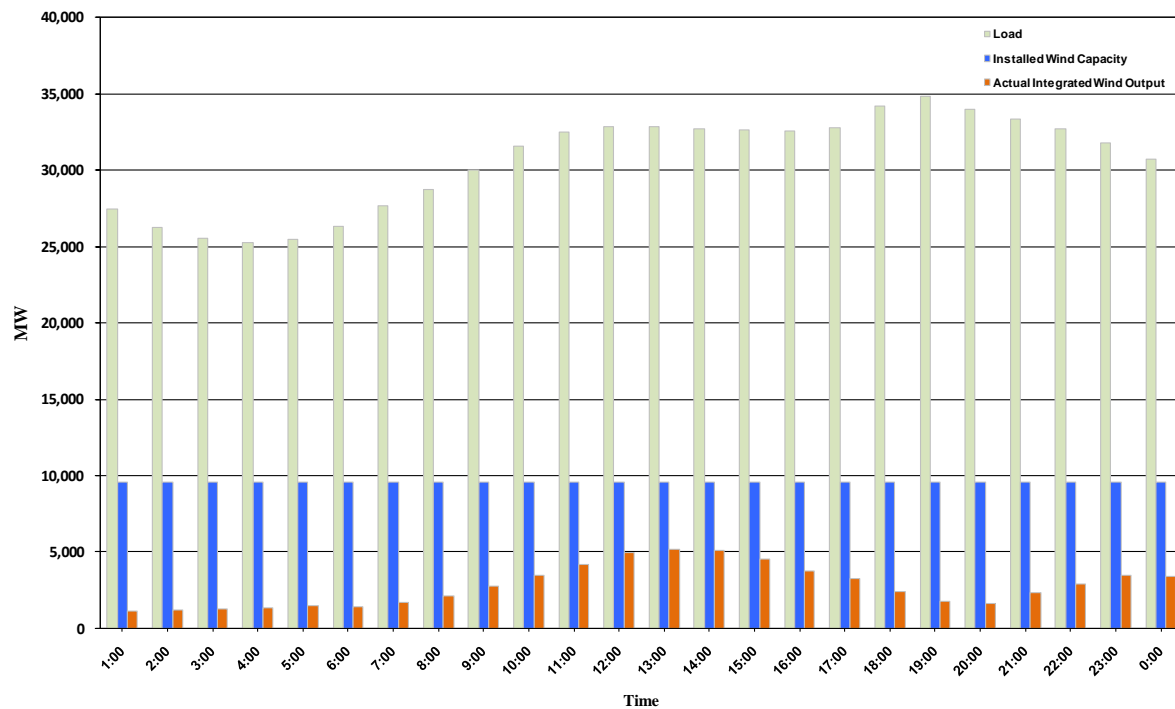




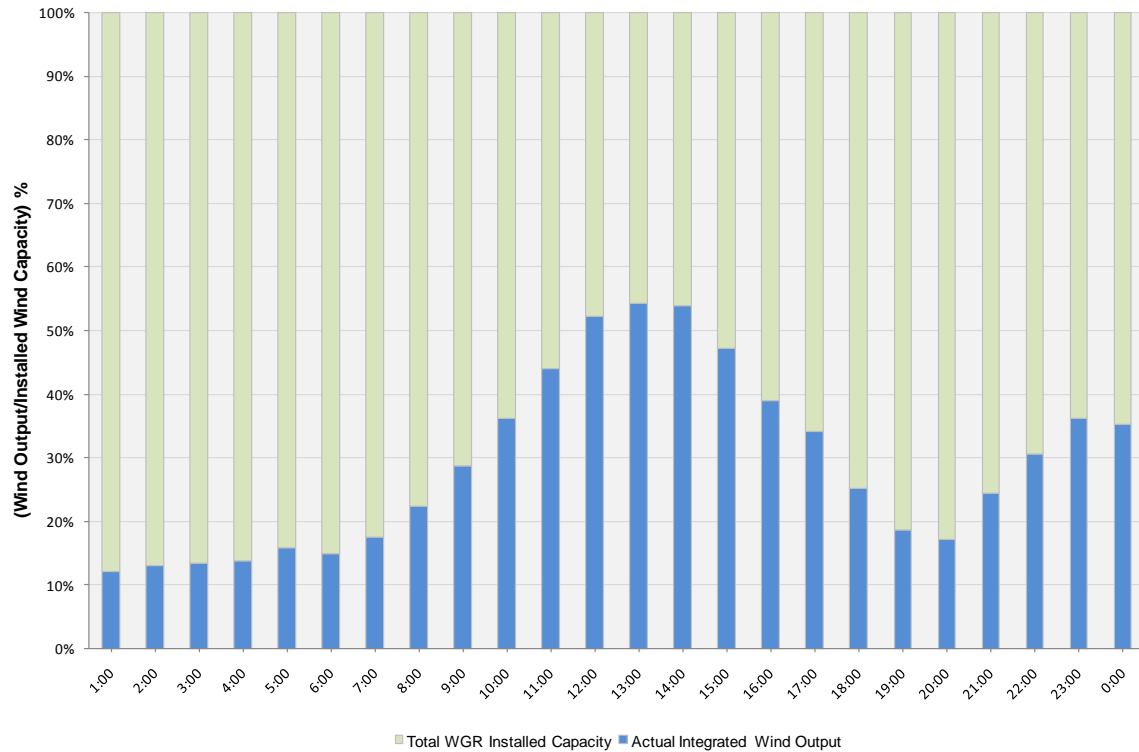
ERCOT Grid Operations Wind Integration Report: 12/24/10

Peak Load	34,802 MW
Load Peak Hour	19
Wind Record 12/11/10	7,227 MW
Max Wind Value	5,424 MW
Wind Peak Hour	13:11:00
Wind Integration %	16.57

Hourly Average Actual Load vs. Actual Wind Output
12-24-2010



Actual Wind Output as a Percentage of the Total Installed Wind Capacity
12-24-2010



Actual Wind Output as a Percentage of the ERCOT Load
12-24-2010

